



100A Cascade Drive, Allentown, PA 18109
 Phone: 610-443-1595 www.thehc.org

2016-2017 Annual Report

Board of Directors

Officers

Abby Goldfarb, President
Lehigh County Conference of Churches

Lara Ruesch, Vice President
Allentown District, PA Board of Probation and Parole

Danette Astolfi, Secretary
Ikaria

Lorna Clause, Treasurer
Keystone Precision Instruments

Members

Ken Charette
Fitzpatrick, Lentz & Bubba

Sean Linder
Corbenic Partners, Financial Consultant

Michelle Santiago, Psy.D.
Moravian College Counseling Center

Farah Vallera, Ph.D
Lehigh University

Patrick van Esch, Ph.D
Moravian College

Melody Weisman
Retired Educator



MISSION STATEMENT

'We give people, especially youth, the knowledge and tools they need to make better-informed and more positive life choices'

PRESIDENT'S MESSAGE

Resiliency..... I know it sounds so simple, but for many people the ability to recover quickly from life's difficulties is not easy.

I encourage you to take the time to listen to a child and hear about the pain inflicted by the bullying of peers. Then, look beyond the poor attendance, behavior and grades of some of our young people and see the yearning for a caring adult to provide them with the skills and encouragement needed to make positive change. And, hold the hand of a recovering addict and feel their grip for support in addressing their disease. Ultimately, look within your heart and find your capacity to provide hope for others. For it is when we reach out to help, that we open a window of opportunity for others.

Opportunity is what we provide at the Center for Humanistic Change through prevention and life skills education. We invest ourselves in our work because we believe that individuals equipped with knowledge and life skills are more likely to make positive, healthy choices in their lives. They become resilient. This is why I serve as the President of the Board.

This Annual Report serves as a window into the hope we provide to people of all ages who live in the Lehigh Valley. I encourage you to read and reflect upon it. Use it to open up conversations about how each one of us can contribute to giving others the knowledge and tools needed to make better informed and more positive choices; therefore, improving the quality of life for all in our community.

Abigail Goldfarb
 President

Participant Totals 2016-2017

Population	Lehigh County	Northampton County	Other Counties	TOTAL
Elementary	2,394	5,245		7,639
Secondary	13,120	5,658	1,662	20,440
Adults	8,686	4,096	895	13,677
TOTAL	24,200	14,999	2,557	41,756

IDENTITY STATEMENT

The Center for Humanistic Change prepares people to meet life's challenges.

We believe that individuals equipped with knowledge and life skills are more likely to make positive, healthy choices in their lives.

We offer evidence-based and custom-designed education focused primarily on building resiliency and preventing substance abuse that gives people the knowledge and skills they need to make better choices.

We serve elementary-, middle-, and high school-aged youth; parents and educators; and employees at workplaces throughout Lehigh Valley, PA.

Although primarily school-focused, we serve people wherever they are—in schools, neighborhoods, community-based organizations, communities of faith, and worksites.

WE EDUCATE

We “train the trainers” and offer programs especially designed for parents and educators.

We teach parents how to communicate more effectively with their children and to recognize the signs of alcohol and substance abuse, dating violence, and cyberbullying.

We also offer custom-designed training for schools, businesses, and community organizations on topics ranging from alcohol, tobacco, and other drug use prevention, relationship and family skills, personal life skills, and violence and bullying prevention.



WE SUPPORT

We support at risk students by teaching them the necessary skills to cope with challenges they face.

The staff of our **Crossroads/Project SUCCESS** program mentored 978 students in 26 schools throughout the Lehigh Valley. The 2016-17 results :66 percent maintained or improved grades; 55 percent of students maintained or improved in attendance, and 71 percent maintained or improved behavior.

We also work with schools to identify students whose alcohol, substance abuse, or mental health issues are becoming barriers to their success – and then help these students get back on track.

WE LEAD

We track local and national trends to ensure our programs are relevant and reflect evidence-based best practices.

For example, in response to the growing concern about the Lehigh Valley's heroin and opioid epidemic, we developed the HOPE (Heroin and Opioid Prevention Education) program for high school students, educators, and other community members.

We also take a leadership role in bringing together people from all sectors of the Valley to collectively address the issues of alcohol and substance abuse.

Heroin & Opioid Addiction: Yes, it CAN happen to you.

If you or anyone you know has a drug problem, there is help:

Lehigh County Drug & Alcohol
610-782-3555

Northampton County Drug & Alcohol
610-829-4725



Joe, Person in Recovery
Lehigh University Masters Candidate

YOUTH: Student Assistance Program

The Student Assistance Program (SAP) is designed to assist school personnel in identifying issues which pose a barrier to a student’s educational success including alcohol, tobacco, and drug issues and mental health issues. The primary goal of SAP is to help students overcome barriers to success in order that they may achieve, remain in school, and advance.

This year CHC expanded Student Assistance Program (SAP) services from 47 to 52 schools where we provide liaison services, technical assistance, material dissemination, newsletters, team maintenance, and evaluation services. Our Commonwealth Approved Trainer certified 141 new SAP professionals.



ADULTS: Mock Teen Bedroom

An interactive display for parents, grandparents, guardians, and any professionals who work with adolescents, young adults, and/or their families to learn: how to identify drug paraphernalia; the many ways drugs and drug use can be disguised; current drug trends in the local area; the most up-to-date information on those trends/drugs; ways to talk to children about drugs and alcohol; and how/where to find help.

BUSINESS/COMMUNITY: HOPE

Opioids are a health and safety issue in the workplace. *At no cost to businesses in the Lehigh Valley*, the Center for Humanistic Change, Inc. is available to provide prevention education and materials.

Our on-site program includes:

- Our interactive presentation called HOPE, ‘Heroin and Opioid Prevention Education’ for employees
- Center for Humanistic Change and PAStop.org (statewide campaign) educational materials and items for employees
- The PAStop.org Workplace Toolkit for employers
- Real-time resources to help employers and employees

Program	% of People Demonstrating Improvement of Knowledge
Anger Management	70.31%
Tobacco Prevention	66.92%
Cyberchoices	65.02%
Too Good for Drugs	63.98%
Alcohol Drugs and Tobacco Education	62.11%
Lifeskills for Adults	58.62%
Too Good For Violence	53.62%
Parenting/STEP	52.94%
Relapse Prevention	43.26%
Bullying	41.30%
Lifeskills for Teens	40.76%
Second Step	37.28%
Conflict Resolution	36.67%
Weekday Club	35.43%



CHC facilitates interactive experience-based trainings and small groups that engage participants in meaningful learning. Many of our programs have been designed in response to the specific needs of schools and communities in the Lehigh Valley. We also offer many evidence-based programs that have been approved by the National Registry of Evidence-Based Programs and Practices (NRE).

Clients Served in 2016 –2017

ES = Elementary School
MS = Middle School
HS = High School

- ◆ AARP Chapter 2144
- ◆ AHEPA 60 Senior Apartments
- ◆ Allentown Central Catholic HS
- ◆ Allentown Health Bureau
- ◆ Allentown Learning And Achievement School
- ◆ Allentown Rotary Club
- ◆ Allentown YMCA
- ◆ Arts Academy Charter School ES Inc.
- ◆ Arts Academy Charter School HS Inc.
- ◆ Bangor CTC
- ◆ Bangor HS
- ◆ Bangor MS
- ◆ Basilio Huertes Sr. Center
- ◆ Bethlehem Catholic HS
- ◆ Bethlehem YMCA
- ◆ Blue Valley Farm Show Bldg.
- ◆ Boys & Girls Club of Allentown
- ◆ Boys & Girls Club of Easton
- ◆ Broughal MS
- ◆ Building 21 Allentown
- ◆ Bushkill ES
- ◆ Bushkill Township Volunteer Fire
- ◆ Calypso ES
- ◆ Carbon Lehigh Intermediate Unit #21
- ◆ Career Institute of Technology
- ◆ Career Link of the Lehigh Valley (Private Industry Council)
- ◆ Caron Lehigh Valley Parent Group, GRASP
- ◆ Catasauqua HS
- ◆ Catasauqua MS
- ◆ Cedar Crest College
- ◆ Cedar View Senior Home (SH)
- ◆ Cement Belt Fair
- ◆ Central ES
- ◆ Central Park SH
- ◆ Cheston ES
- ◆ Clearview ES
- ◆ Cleveland ES
- ◆ Colonel John Siegfried ES
- ◆ Colonial I. U. #20
- ◆ Community Services for Children
- ◆ Concern
- ◆ Confront
- ◆ Coopersburg SH
- ◆ Country Meadows
- ◆ CPA -- Commonwealth Prevention Alliance Member
- ◆ Days Hotel
- ◆ DeSales University
- ◆ Donegan ES
- ◆ Dual Language Charter School
- ◆ DUI Task Force
- ◆ East Hills MS
- ◆ Easton Area Academy
- ◆ Easton Area HS
- ◆ Easton Area MS
- ◆ Easton Community Center
- ◆ Easton YMCA
- ◆ Educational Subcommittee of the Children's Roundtable of Lehigh County
- ◆ Emmanuel Assembly of God Church
- ◆ Emmaus Community Park
- ◆ Emmaus HS
- ◆ Executive Education Academy Charter School
- ◆ Eyer MS
- ◆ First Presbyterian Church
- ◆ Forks ES
- ◆ Fountain Hill ES
- ◆ Fountain Hill Towers
- ◆ Francis D. Raub MS
- ◆ Francis H. Sheckler ES
- ◆ Freedom HS
- ◆ Freemansburg Fire Hall Co.
- ◆ Freemansburg ES
- ◆ George D. Steckel ES
- ◆ Greater Lehigh Valley Nurses Association
- ◆ Gross Towers SH
- ◆ Harrison-Morton MS
- ◆ Harry S. Truman ES
- ◆ Haven House
- ◆ Heroin Task Force
- ◆ Hiram W. Dodd ES
- ◆ Inner City Faith Collaborative
- ◆ I.U. 21 Lehigh Learning Achievement School
- ◆ Jackson Building - Middle School AEDY
- ◆ James Buchanan ES
- ◆ James Lawson Freedom School
- ◆ Jefferson ES (ASD)
- ◆ Justice Works
- ◆ Kalmbach Park
- ◆ KidsPeace
- ◆ Lehigh Career & Technical Institute Academic Center
- ◆ Lehigh Career & Technical Institute Career Academy
- ◆ Lehigh Valley Charter HS for the Performing Arts
- ◆ Lehigh County Jail
- ◆ Lehigh County Adult Probation
- ◆ Lehigh County Children and Youth
- ◆ Lehigh County Community College
- ◆ Lehigh County Conference of Churches
- ◆ Lehigh County Corrections
- ◆ Lehigh County Courthouse
- ◆ Lehigh County Government Center
- ◆ Lehigh County Juvenile Probation
- ◆ Lehigh Learning & Achievement School
- ◆ Lehigh Parkway ES
- ◆ Lehigh Valley Active Life
- ◆ Lehigh Valley Health Network
- ◆ Lehigh Valley Iron Pigs
- ◆ Lehigh Valley Mall
- ◆ Liberty HS
- ◆ Lincoln Elementary Early Child Center
- ◆ Lincoln ES
- ◆ Lincoln Leadership Academy CS
- ◆ Louis E. Dieruff HS
- ◆ Lower Macungie MS
- ◆ Luis A. Ramos ES
- ◆ Macungie Park
- ◆ Macungie VFW
- ◆ Moravian Academy Lower
- ◆ Moravian Academy Upper
- ◆ March ES
- ◆ Moravian College
- ◆ Moravian Historical Society
- ◆ Moravian MS
- ◆ Muhlenberg College
- ◆ Newcomer Academy
- ◆ Nazareth Area MS
- ◆ Nazareth Area HS
- ◆ Nitschmann MS
- ◆ Northampton Area HS
- ◆ Northampton Community College
- ◆ Northampton County D&A
- ◆ Northeast Ministries
- ◆ Northern Lehigh HS
- ◆ Northern Lehigh JHS
- ◆ Northeast MS
- ◆ Northwestern Lehigh HS
- ◆ Northwestern Lehigh MS
- ◆ Notre Dame HS
- ◆ Old York Road Senior Ctr.
- ◆ Orefield MS
- ◆ Palmer ES
- ◆ Paxinosa ES
- ◆ Parkland HS
- ◆ Pen Argyl HS
- ◆ Phillipsburg School District
- ◆ Plainfield ES
- ◆ Portland Walk & Park
- ◆ PPDA -- Pennsylvania Prevention Director's Association Member
- ◆ PTM One Church
- ◆ Ridge Manor SH
- ◆ Robert Clemente Charter School
- ◆ Robert Clemente Elementary Charter School
- ◆ Roosevelt ES
- ◆ Saint Francis of Assisi Church
- ◆ Saint Luke's Health Network
- ◆ Saint Luke's Neighborhood Center
- ◆ Saint Luke's Visiting Nurses Association
- ◆ Salisbury MS
- ◆ Salisbury HS
- ◆ Salvation Army Children's Services
- ◆ Sands Casino Event Center
- ◆ Schnecksville Fair
- ◆ School Nurse Institute
- ◆ Seven Generations Charter ES
- ◆ Shawnee ES
- ◆ Siegfried ES
- ◆ Slate Belt Senior Ctr.
- ◆ Slatington ES
- ◆ South Mall
- ◆ South Mountain MS
- ◆ Southern Lehigh HS
- ◆ Southern Lehigh MS
- ◆ Spring Garden Childrens Ctr.
- ◆ Springhouse MS
- ◆ Statewide Gambling Prevention Program Task Force
- ◆ STRIVE
- ◆ Tracy ES
- ◆ Treatment Trends, Inc.
- ◆ Trexler MS
- ◆ Truancy Educational Roundtable
- ◆ United Way GLV - LEARN Group (Early Childhood)
- ◆ United Way GLV- Education Partner
- ◆ United Way GLV-Mentoring in Allentown Group
- ◆ Valley Preferred Cycling Center
- ◆ Walnutport Playground
- ◆ Western Salisbury ES
- ◆ Wheels for HOPE
- ◆ Whitehall-Coplay HS
- ◆ Whitehall Partner Project
- ◆ Whitehall-Coplay CTC
- ◆ Whitehall-Coplay MS
- ◆ William Allen HS
- ◆ William Penn Building – HS AEDY
- ◆ Wilson Area HS
- ◆ Wind Gap Boro Park
- ◆ Wind Gap MS
- ◆ Yosko Park
- ◆ Zephyr ES

Our Appreciations to Our Donors

Up to \$99.00

Abbey Lenhart
 Adrienne M. Hibschan
 Al Hanson
 Alan D. Hulsman
 Alison Loyko & Ann Arey
 Allen Hess
 Amanda Yost
 Amie Tracy
 Amy Fields
 Angela Heiland
 Antonio Martins
 Barry Shapin
 Ben Bowen
 Big Earl/Deb
 Brandi Haley
 Brenda Reagle
 Brenda Sandt***
 Brenda Walsh.
 Brett Barnes & Janel Lebourgeois
 Brian Schleicher
 Bubba Evemus
 Carl Herford
 Catherine Granett
 Chad Molner
 Chelsea Buffaloe
 Cheryl Walbert &
 MiKayla DeMelfy
 Chopper Joe
 Chris Loch
 Christina Jennings
 Christine Steltz
 Claire J. Nees
 Claire Stephen
 Colt Snyder
 Cynthia Huhn
 Dan & Deb Naus
 Dan Snyder
 Dawn & Jamie Bothwell
 Debbie McGowan
 Diane Menio
 Don Fronczak
 Donna Schoen
 Dorothea L. Barsness
 Dottie Antolick
 Doug Guth
 Eastern PA & South Jersey CFC
 Elena Helmuth
 Elizabeth Newbern
 Ellen Einstein
 Eric Gade
 Erica Gross
 Ernest Eschbach
 Fawn Albert
 George Treisner Jr.
 Glen Hoffert
 Greg Rassler & Sabrina Pendleton
 Gregory and Linda MacGill
 Harter
 Health Network Laboratories****
 Helen Ruesch
 Ilda Martins
 Jackie Herford
 James & Mildred Keegan**
 Tracy Shisslak****
 Jane Blake

Up to \$99.00

Jaymee-Leigh Kunsman
 Jeffrey & Mariel Molitorisz
 Jesse Smith
 Jessica LaBar Palumbo
 Jim Demilio
 Jim Mort
 Jim Rader & Tina Marshall
 Joan & Ozzy Miller
 Joan Miller
 Jocelyn Koller**
 John Keglovics
 Joleen Hanlund
 Jonathan Pfleager
 Joni Novotnak
 Josh Weldon
 Judith Smullen***
 Karen Kohn
 Kate Joyce
 Kathleen Elliott
 Kathleen Horvath
 Kathleen Rayne
 Kellie Eshbach
 King's Riders
 Kocon Diana
 Laura Bickert Ciarlello
 Laura Smith
 Lehigh Valley School of Dental
 Assisting**
 Leonard & Eve Stefanko**
 Linda Bauer
 Lynn Milet
 Marie Bartos
 Mark Schumacher
 Mary Erdman
 Marybeth Nowak
 Melika Jenkins
 Michael & Joan Howe
 Michelle Santiago
 Mike Werley
 Mildred Miller
 Mitchell, Tori & Bonnie Bortz
 Molitoris
 Monique Schobert
 Nancy Becker
 Nancy Howe
 Nancy Kembel
 Napolitano
 Nathan Andies
 Ozzy Miller
 Pamela James
 Patrice Schwartzman
 Patrick Lund
 Paul Morrison
 Pete Stoeckel
 Peter Grodziak
 Randy Dugey
 Ray Brown
 Ray Venable
 Richard Lund
 Richie Biechy
 Rob Hawkey
 Robert J. Motley
 Robert Motley
 Robert Walbert
 Ron & Tania Walters
 Ron Fiore

Up to \$99.00

Rosemary Nichols***
 Ruth Skoglund.
 Sabrina Mita
 Sabrina Sabatino
 Sariann Knerr
 Scentsy
 Scott & Lisa Watkins
 Sean Young
 Selena Hanson
 Siobhan Walsh-Bonis
 Skip Napolitano
 Sonia C. Oliveira
 Stephanie M. Dorney
 Stephen Krumm
 Susan Gilmore
 Susan Henry
 Theodore & Patricia Kwiatkowski**
 Thomas & Ann Quinnan**
 Thomas & Joan McDonald**
 Thomas Trumbauer***
 Tiffany L. Marcotte
 Tim Howe
 TNP dba The Belmont Inne
 Tracey Masen Heimer
 Tracy Taylor
 Tracy Shisslak****
 Trisha Moller
 Tristan Miller
 Troy Philhower
 Wendy Bartkus
 William Henninger & Jessica Gansel
 William Spellmeyer & Penny Frizke

\$100-\$249

Abigail Goldfarb
 Always Greener Landscaping
 Amber Foruria
 Andrea L. Bickert
 Combined Federal Campaign
 Danette Astolfi
 David Levine/Nu Go
 Denise de Mena
 Drivelocker, LLC
 Gerry Krupka
 Greater Lehigh Valley School Nurse
 Assoc.
 Jennie Organic
 JetPay
 Jocelyn Stamer
 Kalmbach Memorial Park
 Karen Korpics
 Kenneth Charette
 Kim Moyer
 Kistler Tiffany Benefits
 Kristen A. Hettrick
 Lara Ruesch
 Lori Pieczynski***
 Maria Andros International Inc.***
 Martin Renshaw***
 Mary Bradley**
 Meghan Gilroy***
 Melissa A. Korpics
 Melissa Becker***
 Melody Weisman
 Nancy Bruce*

\$100-\$249

Susan Beebee***
 Tammy Eisenhart***
 Teamsters Local Union #773
 William & Judith Ketterer

\$249-\$499

Donna Jacobsen
 EZ Micro Solutions, Inc.
 Lisa Wolff
 Lorna Clause
 Mary Ellen Jackson.
 Pamela Milliken
 RC Kelly Law Associates, LLC
 Robert Thomson
 Sean G. Linder
 Suzanne Evans Coaching LLC***

\$500-\$999

Anonymous
 Frances K. Bentkowski
 Carpino Family
 Gross McGinley
 Gunther Heussman, Inc.
 Morey Nee Buck & Oswald LLC
 Keystone Precision Instruments
 Pantsuit Nation- Lehigh Valley
 Chapter
 Spark Orthodontics
 Vargo Pharmacy Services LLC
 Medicap Pharmacy
 Zions Evangelical Lutheran Church

\$1000-\$2499

Grace Bradley Kelly
 Arlene Lund & Family

\$2500+

Anonymous
 Catholic Human Service Foundation
 Lehigh County Department of
 Human Service, Drug and Alcohol
 Division
 Northampton County Department of
 Human Service, Drug and Alcohol
 Division
 Schyler Kemp's Foundation
 Trumbower Hospital Foundation
 Two Rivers Health & Wellness
 Foundation

*In memory of Hannah Jordan

**In memory of TJ McGraw

***In memory of Jacob Swartz

****In memory of Joseph Shisslak

Special Appreciations to the Volunteers who organized "Wheels Up For HOPE"



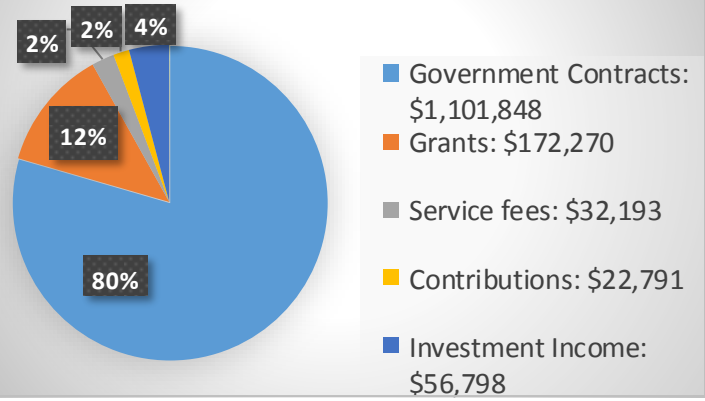
FINANCIAL REPORT: July 1, 2016 –June 30, 2017

CHC is financially stable. With a strong investment portfolio, the agency's bottom line grew modestly in the 2016-2017 fiscal year.

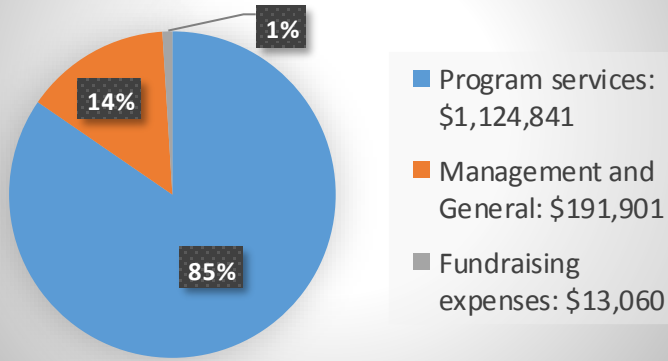
The Board provides prudent oversight of the finances and assists the Executive Director with financial management, allowing for smart growth of the agency that aligns with the agency's mission.

85% of government, grant, service fees and contribution revenues support direct programming to engage community members in building skills for life's challenges.

Statement of Activities: FYE 6/30/17 Revenues, Gains and Other Support



Statement of Activities: FYE 6/30/17 Expenses & Losses



For the year ended June 30, 2017, the audit opinion confirmed that the audit was in conformity with: "accounting principles generally accepted in the United States of America" and not generally accepted auditing standards.

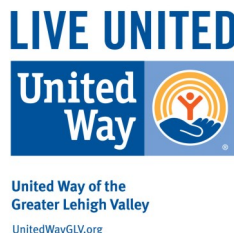
The audit was conducted by Morey, Nee, Buck & Oswald, Certified Public Accountants and Advisors. CHC is registered through the Pennsylvania Department of Charitable Organizations. Registration does not imply endorsement.

Appreciations to our funders who provided Grants and Contracts for our programs.

- Anonymous
- Catholic Human Service Foundation
- Lehigh County Department of Human Service, Drug and Alcohol Division
- Northampton County Department of Human Service, Drug and Alcohol Division
- Schyler Kemps Foundation
- Trumbower Hospital Foundation
- Two Rivers Health & Wellness Foundation

Thank you to our Sponsors for supporting CHC.

- Carpino Family
- Gross McGinley, LLP, Attorneys At Law
- Keystone Precision Instruments
- Spark Orthodontics
- Gunther Heussman, Inc.
- Morey Nee Buck & Oswald LLC
- Vargo Pharmacy Services LLC Medicap Pharmacy
- EZ Micro Solutions, Inc.
- RC Kelly, Law Associates, LLC
- The Lund Family
- Jennie Organics
- JetPay HR & Payroll Services
- Kistler Tiffany Benefits
- NuGo Nutrition



Highmark is an Independent Licensee of the Blue Cross and Blue Shield Association